

# IC

Africa  
Asia Pacific  
Central Europe  
Europe  
Global  
Latin America  
MENA  
North America  
Turkey

# Global

**amis**  
Centre  
Pompidou



# The International Circle

**“The Musée National d’Art Moderne’s vision embodies the most generous and open definition of the word “national.” It defends the creativity and vitality of the French art scene, both in France and abroad, in constant dialogue with the excellence of art scenes the world over. ”**

**Xavier Rey**

Director of the Musée National d’Art Moderne

Created in 2013, and with nine geographic chapters, each corresponding to a region of the world, the International Circle (IC) of the Amis du Centre Pompidou is a major and fundamental platform that works to broaden the representation of international artists and promote them within the national collections.

The IC brings together modern and contemporary art collectors and art enthusiasts from all over the world, who enjoy the debates with the Museum’s curators, and benefit from yearlong privileged access to its Director and curatorial team. The IC currently comprises close to 200 members from all over the world, with over 45 nationalities represented.

## The IC-Global

A focus on discovery, impact and influence — these are the watchwords of the IC-Global, the first chapter of the International Circle, whose purpose, since it’s launch in 2013, is to support the acquisition of iconic and emblematic pieces that are representative of artistic and cultural scenes from around the globe. Since its creation, the IC-Global has been bringing together collectors from around the world who are eager to learn from the expertise of the curators and drive game-changing acquisitions for the national collections. IC-Global members gather for three meetings a year, with their referent curator and the Museum Director to discuss artist perspectives and artwork proposals to enrich the collections.

Thanks to the IC-Global, 73 major artworks from 47 artists, representing 27 different nationalities have entered the collections of the Musée National d’Art Moderne, including contemporary masterpieces by Verena Loewensberg, Yinka Shonibare and Ulrike Ottinger.



Lin May Saeed, *Landscape with Ant Hills*, 2021  
Courtesy of the artist  
Gift of the Amis du Centre Pompidou, IC-Global, 2024



Yinka Shonibare, *Tightrope Revolution Kid (Calf Boy)*, 2013  
Courtesy of the artist  
Gift of the Amis du Centre Pompidou, IC-Global, 2021

# Joining the IC-Global means:

## BROADENING

the representation of the global art scene within an institution of international prominence and contributing to the enrichment of the collections of the Musée National d'Art Moderne.

## DISCUSSING

and expanding your knowledge via privileged exchanges with the curators of the Museum and its Director, artists and professionals of the art world, and collectors from all around the world.

## ACCESS

to major art world events and encounters as well as exclusive artistic content, alongside a community of committed patrons.



Pia Camil, *Espectaculo, Telen*, 2013  
Courtesy of the artist  
Gift of the Amis du Centre Pompidou, IC-Global, 2015



Mamma (Karin) Andersson, *Den Lilla system II / The Little Sister II*, 2016  
Courtesy of the artist  
Gift of the Amis du Centre Pompidou, IC-Global, 2016

## How does it work ?

### 1 - STUDY MEETING (April - June) - Digital format

IC members start the year on a high note in **an open discussion** with the curators who present artists of interest and share their strategic vision for the year ahead.

To further highlight the richness and diversity of the Museum's collections, referent curators present one of its masterpieces. Afterwards, a recap of the Study Meeting is sent to all members and the document remains accessible via your personal online account.

### 2 - ACQUISITION MEETING (October - November) - In person and online

Members **vote on the acquisition proposals** made by the curators for the artwork(s) that will enter the national collections, upon approval of the national commission.

### 3 - PERSPECTIVE MEETING (December) - Digital format

Members and the curators review the achievements of the year, share upcoming highlights and events (exhibitions, openings...), and **discuss acquisition perspectives for the next year**.

# Referent curators



**Marcella Lista**

Head of the New Media Department

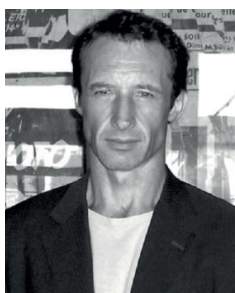
Marcella curated exhibitions including: *Work Sons et Lumières : Une histoire du son dans l'art du XXe siècle* with Sophie Duplaix (2004), *Walid Raad. Préface à la Première Edition* (2013), *Chine - Une nouvelle génération d'artistes*, *Homes - Apichatpong Weerasethakul* (2024).



**Angela Lampe**

Curator of Modern Collections Department

Angela curated the exhibition *Vues d'en haut* in 2013 at Centre Pompidou-Metz and co-curated exhibitions such as *Edvard Munch, l'oeil moderne* in 2012 and *Allemagne / Années 1920* in 2022 at the Centre Pompidou.



**Philippe-Alain Michaud**

Head of the Experimental Cinema Department

Philippe-Alain curated several exhibitions including : *Images sans fin, Brancusi photographie, film* at Centre Pompidou in 2012 with Quentin Bajac and Clément Cheroux, *Beat Generation* in 2016 and *L'oeil extatique: Sergueï Eisenstein à la croisée des arts* at Centre Pompidou-Metz in 2019.



**Jonathan Pouthier**

Assistant curator at the Experimental Cinema Department

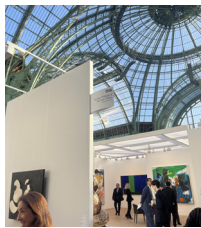
Jonathan curated several exhibitions, including *Ericka Beckman* at KANAL-Centre Pompidou Brussels in 2019 and *Le reste est ombre. Pedro Costa, Rui Chafes, Paulo Nozolino* at Centre Pompidou in June 2022, co-curated with Philippe-Alain Michaud.

# Major events

The **Dîner des Amis** of the Amis du Centre Pompidou is the not-to-be missed evening of the year where artists, curators, gallerists and collectors come together to share a unique moment at the heart of the collections of the Musée National d'Art Moderne.



# Benefits



## An International bespoke programme

- Until September 2025, private curator-led visits of the Centre Pompidou.
- From April 2025, private curator-led visits of exhibitions of the programme Constellation I Centre Pompidou programme (Grand Palais, Centre Pompidou Metz, Orsay ...), including outside of opening hours by appointment with our team.
- Programme of visits and encounters with artists and collectors around Art Basel (Paris & Basel), Frieze London, Paris Photo, the Venice Biennale and our Gala dinner.



## Travel around the world with our curatorial team

- Exclusive cultural trips around the world: fair walkthroughs, museum exhibitions, private collections and artist studio visits with our curatorial team.



## Exclusive digital content

- Access via your personal online account to a platform of digital content made exclusively for you. Explore videos and podcasts that reveal the secrets of the collection and discover rich narratives of art history and knowledge that the Museum's curators, collectors, artists and other key actors of the art world have to share.



## Exceptional Invitations

- VIP Passes to major international contemporary art fairs, upon request.
- Invitations to openings of the Centre Pompidou's exhibitions for two (Solo membership) or four (Duo membership).
- Invitations to openings for two (Solo membership) or four (Duo membership) to the exhibitions of the Centre Pompidou in partner institutions that are part of the Constellation I Centre Pompidou programme (Grand Palais, Centre Pompidou Metz, Orsay ...).
- Priority access (upon reservation and payment) to the Amis du Centre Pompidou annual Dîner des Amis.



## Benefits at the Centre Pompidou, until September 2025

- Priority and unlimited access to the Centre Pompidou upon presentation of your up-to-date physical or digital member card.
- Complimentary catalogues of major exhibitions organized by the Centre Pompidou (four per year).
- 5% off at the shop and 10% off online (excluding books).

## New! Constellation I Centre Pompidou

From April 2025 onward, enjoy privileged access\* to the Centre Pompidou's exhibitions in partner institutions of the Constellation I Centre Pompidou programme in France and abroad!

\* Upon presentation of your up-to-date physical or digital membership card  
More Information to come.

# Membership

Membership Donation starts at:

**11 000 € \*** per year

Subscription fees:

**Individual 500 € / Duo 800 €** per year

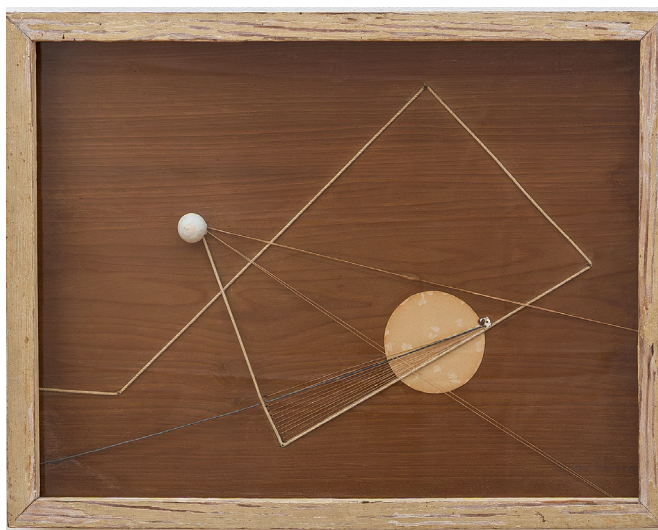
The application of each candidate is submitted to the Nomination Committee of the Amis du Centre Pompidou. The Amis du Centre Pompidou have established various partnerships to allow French and international donors to support our organization, while benefiting from fiscal advantages as provided by the legislation in their country. The team remains at your disposal to assist you with any queries you may have.

By joining the Amis du Centre Pompidou, you accept the association's [confidentiality policy](#) and [ethics charter](#).

*\*90% of your donation is dedicated to finance the purchase of artworks and 10% of your donation covers the administrative costs of the Amis du Centre Pompidou.*



Ulrike Ottinger, *Liebesperlen* (Love pearls), 1967  
Courtesy of the artist  
Gift of the Amis du Centre Pompidou, IC-Global, 2022



Marlow Moss, *Drawing with montage No. 17*, 1945  
Gift of the Amis du Centre Pompidou, IC-Global, 2024

## For all enquiries, please contact

Anaïs de Senneville  
Executive Director

T +33 6 50 47 04 01

[anaïs.desenneville@centrepompidou.fr](mailto:anaïs.desenneville@centrepompidou.fr)

[amisducentrepompidou.fr](http://amisducentrepompidou.fr)





# CAPTIVATING A MAN

a reversal of the means by which a woman captivates a man: The man is made attractive by the woman. In heterosexual reversal, the power of makeup turns back on itself: captivation is masochism.

September, 1972

amis  
Centre  
Pompidou

Martha S. Wilson